



# ToolManager™ 2020

## Take control of your entire tooling environment

Managing the purchasing, calibration, tracking, and lifecycle of thousands of tools and multiple cribs is complex, and integrating these systems with IT is challenging. Paper-based, labor-intensive tool management systems are not efficient enough for today's sophisticated shop floor. The need to reduce scrap, streamline projects, and lower costs is paramount. RealVision ToolManager software is a comprehensive tool, gage and crib management system that accurately and cost-effectively puts you in complete control of your shop floor tooling environment reducing tool costs and boosting your bottom line.

## The most efficient tool system available!

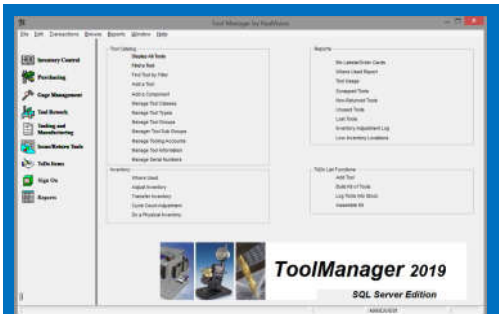
RealVision ToolManager manages tool purchasing, calibration, tracking, location and life cycle for multiple tool cribs, project and task status, reporting, and much more. Authorized personnel can monitor the entire workflow, including tool availability, inventories, tool issuing, and crib activities from any PC or wireless device on the

## Flexible—Scalable

ToolManager is available as a stand-alone solution, as well as a fully integrated module to the ProDocTivity Integrator Manufacturing Execution System (MES), with the flexibility to dynamically retrieve data from legacy or standard applications including MRP, CIM, ERP, EDI, and more.

## A tool system that makes complexity manageable

RealVision ToolManager makes managing the details of work flow easier than ever before. Our clients rely on the system daily to track outstanding actions for any work order with our exclusive "To-Do List" capability. You also gain increased flexibility and control to manage diverse, nonstandard production cycles with naming and numbering codes coming from multiple suppliers—all recorded with organized ease and consistency.



Easily manage inventory, monitor workflow and work order process.

**"We chose RealVision ToolManager for its built-in flexibility that allows us to tailor shop information for our shop floor."**

Rick Toth, President, Toth Industries

### ToolManager gives you:

- Complete and accurate tool & crib management
- Scalability to grow
- Increased productivity and control

### Free Demo

Call 208-939-2428 Ext 250 to learn more about ToolManager and see firsthand what it can do for your business.

## RealVision, Inc.

USA / North America

P.O. Box 187

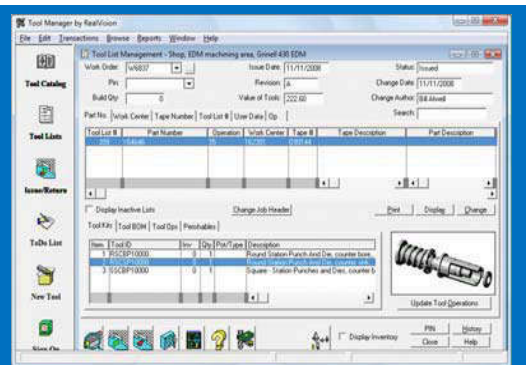
Eagle, ID 83616

tel 208 939 2428

fax 208 939 2733

sales@realmfg.com

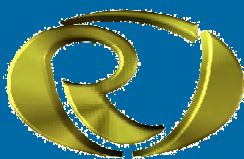
www.realvisionmfgsolutions.com



Easily pick the right tool for the job, order and view tools, view graphics, combine picked tools. Create kits, tool BOM's quickly and efficiently.

network. ToolManager also protects you against theft as part of its revolutionary tool crib and operations management. Scalable to meet your output demand from small business to enterprise, ToolManager is the right choice to meet your tool management requirements today and tomorrow.

The RealVision Connect™ allows the system to be available in three database structures DB2, SQL and Oracle. Data available for standard reporting using predefined templates for critical information, including inventory value, cost per job, tool usage and history, hazardous materials, and more. You can also export data from ToolManager's rich database to external tools like MS-Excel and third party report writers for custom reporting needs.



The Shop Floor Productivity Experts



**ToolManager Features:**

- Scalable from small business to enterprise
- Multi-level security
- Inventory control and warranty management
- Tool and part kitting per procedure
- Document-process management
- Labor scheduling and history tracking
- Full reporting and cost tracking
- Preventive Maintenance Scheduling
- Asset tracking
- Component tracking
- Work scheduling
- Work order/PO integration
- Inventory management
- Cost tracking by asset, dept., labor, etc.
- Barcode tracking
- Purchase order and work order integration
- Reporting full work details & cost history



*The Shop Floor Productivity Experts*

**Full wireless support for PDAs**

ToolManager supports handheld barcoding for issuing and receiving tools, taking physical inventories, tool tracking, and purchasing using the latest PDA wireless scanners. Tool tracking features in ToolManager means you will know the location of all your tools, fixtures and gages in the shop, crib and outside locations.

**Document linking**

RealVision ToolManager includes an integrated viewing package which supports unlimited and different file formats such as PDF, CAD/CAM and more, allowing the user to link and view multiple documents related to specific tools. Combine with RealVision webDNC and/or DocManager for expanded tooling with other NC programs and documentation from other departments.

**ToolManager Solutions**

**Why RealVision**

With over 30 years of experience, RealVision Manufacturing Solutions' unparalleled knowledge of manufacturing and shop floor operations is built into each of its products. Built by engineers for engineers, these practical solutions easily adapt to any manufacturing environment to provide all the efficiency and flexibility you need to manage your production systems flawlessly and build productivity, reduce scrap, save time, and lower costs.

**Contact Us Today**

Contact RealVision today at 1-208-939-2428 Ext 250 to request a free demo—the best way to visualize how RealVision can improve your tool and shop floor productivity and boost your bottom line.

Shop Floor/IT Needs	ToolManager Solutions	Results/Benefits
<ul style="list-style-type: none"> <li>• Windows based, single solution to manage all tool fixtures, gages, gage calibration and crib(s)</li> <li>• Scale and grow with business demands</li> </ul>	<ul style="list-style-type: none"> <li>• Affordable, integrated, complete control of all tooling and single/multi cribs</li> <li>• Single or networked solution</li> <li>• Concurrent licensing</li> </ul>	<ul style="list-style-type: none"> <li>• One product, many tool and crib capabilities</li> <li>• Eliminates multiple point products</li> <li>• Powerful features for engineers</li> <li>• SMB to enterprise, afford what you need now, grow easily later</li> </ul>
<ul style="list-style-type: none"> <li>• Reduce or eliminate paper based systems to manage tooling, fixtures, gages or crib(s)</li> </ul>	<ul style="list-style-type: none"> <li>• Digitized tool and crib management system</li> <li>• Replace manual based paper systems</li> </ul>	<ul style="list-style-type: none"> <li>• Reduce human error, information is current and accurate</li> <li>• Information is available to all individuals/groups concurrently</li> </ul>
<ul style="list-style-type: none"> <li>• Flexibility to integrate with disparate IT systems, applications, bar coding</li> <li>• Manage multiple file types, graphics and blueprints</li> </ul>	<ul style="list-style-type: none"> <li>• Dynamically connect to legacy or disparate IT systems, i.e. ERP with RealVision Connect ODBC</li> <li>• Supports unlimited file types: PDF, CAM/CAD, multiple bar-coding systems</li> <li>• Exclusive To-Do list capability</li> </ul>	<ul style="list-style-type: none"> <li>• Can dynamically manage tooling information in MRP/ERP systems</li> <li>• Web-based, simplified access</li> <li>• Easier purchasing process with integrated EDI with email</li> <li>• Authorized staff can monitor work flow</li> </ul>
<ul style="list-style-type: none"> <li>• Reduce tool management complexity</li> <li>• Use multiple tool, description, and numbering methodologies</li> <li>• Easy tracking of actions to work order completion</li> </ul>	<ul style="list-style-type: none"> <li>• Powerful wizard, easy to navigate menus</li> <li>• Secure sign in/out, purchasing, gage, calibration, authorizing, ID</li> <li>• Create tool lists, MBOM, reporting, presetting, tool issue and return and more</li> </ul>	<ul style="list-style-type: none"> <li>• Increase productivity</li> <li>• Flexible to accommodate any naming/numbering system</li> <li>• Easily associate tool lists with the manufacturing process/BOM</li> </ul>
<ul style="list-style-type: none"> <li>• Integrate with Tool Presetter and DNC (Direct Numerical Control) machines</li> <li>• Integrate tooling data with preventative maintenance</li> </ul>	<ul style="list-style-type: none"> <li>• Communicates via RS-232</li> <li>• Integrate with RealVision WebDNC and Toolset</li> <li>• Combine with RPM for preventative maintenance</li> </ul>	<ul style="list-style-type: none"> <li>• Affordable, integrated solution to manage your tooling systems</li> <li>• Prolong tool life, minimize new tool purchases, bolster productivity and the bottom line</li> </ul>
<ul style="list-style-type: none"> <li>• Secure system; anti-theft protection</li> </ul>	<ul style="list-style-type: none"> <li>• Authorized staff, user and tool hierarchy</li> </ul>	<ul style="list-style-type: none"> <li>• Secure and efficient workflow</li> </ul>