

RealVision Manufacturing Solutions, Inc.

ToolManager™

Take control of your entire tooling environment

Managing the purchasing, calibration, tracking, and lifecycle of thousands of tools and multiple cribs is complex, and integrating these systems with IT is challenging. Paper-based, labor-intensive tool management systems are not efficient enough for today's sophisticated shop floor. The need to reduce scrap, streamline projects, and lower costs is paramount. RealVision ToolManager software is a comprehensive tool and crib management system that accurately and cost-effectively puts you in complete control of your shop floor tooling environment—reducing the possibility for errors and boosting your bottom line.

The most efficient and effective tool system available!

Web-based and IT-friendly, ToolManager manages tool purchasing, calibration, tracking, location and life cycle for multiple tool cribs, project and task status, reporting, and more. Authorized personnel can monitor the entire workflow, including tool availability, inventories, tool issuing, and crib activities from any PC or wireless

ToolManager is available as a stand-alone solution, as well as a fully integrated module to the ProDocTivity Integrator Manufacturing Execution System (MES), with the flexibility to dynamically retrieve data from legacy or standard applications including MRP, CIM, ERP, EDI, and more.

A tool system that makes complexity manageable

RealVision ToolManager makes managing the details of work flow easier than ever before. Our clients rely on the system daily to track outstanding actions for any work order with our exclusive "To-Do List" capability. You also gain increased flexibility and control to manage diverse, nonstandard production cycles with naming and numbering codes coming from multiple suppliers—all recorded with organized ease and consistency.



"We chose RealVision ToolManager for its built-in flexibility that allows us to tailor shop information for our shop floor."

Rick Toth, President, Toth Industries

ToolManager gives you:

- Complete and accurate tool & crib management
- Scalability to grow
- Increased productivity and control

Free Demo

Call 208-939-2428 to learn more about ToolManager and see firsthand what it can do for your business.

RealVision, Inc.

USA / North America

787 E State St.

Eagle, ID 83616

phone 208.939.2428

fax 208.939.2733

sales@realmfg.com

www.manageyourtooling.com



The Shop Floor
Productivity Experts

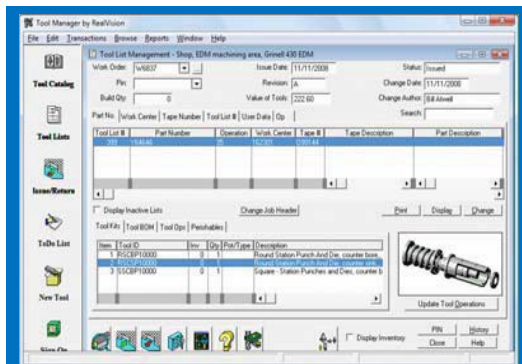


Figure 1. Easily pick the right tool for the job, order and view tools, view graphics, combine picked tools.

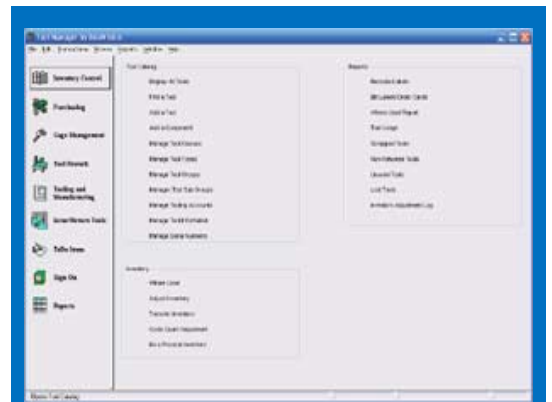


Figure 2. Easily manage inventory, monitor workflow and work order process.

device on the network. ToolManager also protects you against theft as part of its revolutionary tool crib and operations management. Scalable to meet your output demand from small business to enterprise, ToolManager is the right choice to meet your tool management requirements today and tomorrow.

The RealVision Connect™ ODBC framework environment, available in three database types, makes data available for standard reporting using predefined templates for critical information, including inventory value, cost per job, tool usage and history, hazardous materials, and more. You can also export data from ToolManager's rich database to external tools like MS-Excel and Crystal Reports for custom reporting needs.

Full wireless support for PDAs

ToolManager supports handheld barcoding for issuing and receiving tools, taking physical inventories, tool tracking, and purchasing using the latest PDA wireless scanners.

Document linking

RealVision ToolManager includes an integrated viewing package which supports unlimited and different file formats such as PDF, CAD/CAM, and more, allowing the user to link and view multiple documents related to specific tools. Combine with RealVision DocManager for expanded tooling with other documents from other departments.

Why RealVision

With over 25 years of experience, RealVision Manufacturing Solutions' unparalleled knowledge of manufacturing and shop floor operations is built into each of its products. Built by engineers for engineers, these practical solutions easily adapt to any manufacturing environment to provide all the efficiency and flexibility you need to manage your production systems flawlessly and build productivity, reduce scrap, save time, and lower costs. Contact RealVision today at 1-208-939-2428 to request a free demo—the best way to visualize how RealVision can improve your tool and shop floor productivity and boost your bottom line.

ToolManager Solutions

Shop Floor/IT Needs	ToolManager Solutions	Results/Benefits
<ul style="list-style-type: none"> • Windows based, single solution to manage all tool fixtures, gages and crib(s) • Scale and grow with business demands 	<ul style="list-style-type: none"> • Affordable, integrated, complete control of all tooling and single/multi-cribs • Single or networked solution • Concurrent licensing 	<ul style="list-style-type: none"> • One product, many tool and crib capabilities • Eliminates multiple point products • Powerful features for engineers • SMB to enterprise, afford what you need now, grow easily later
<ul style="list-style-type: none"> • Reduce or eliminate paper based systems to manage tooling, fixtures, gages or crib(s) 	<ul style="list-style-type: none"> • Digitized tool and crib management system • Replace manual based paper systems 	<ul style="list-style-type: none"> • Reduce human error, information is current and accurate • Information is available to all individuals/groups concurrently
<ul style="list-style-type: none"> • Flexibility to integrate with disparate IT systems, applications, bar-coding • Manage multiple file types, graphics and blueprints 	<ul style="list-style-type: none"> • Dynamically connect to legacy or disparate IT systems, i.e. ERP with RealVision Connect ODBC • Supports unlimited file types: PDF, CAM/CAD, multiple bar-coding systems • Exclusive To-Do list capability 	<ul style="list-style-type: none"> • Can dynamically manage tooling information in MRP/ERP systems • Web-based, simplified access • Easier purchasing process with integrated EDI with email • Authorized staff can monitor workflow
<ul style="list-style-type: none"> • Reduce tool management complexity • Use multiple tool, description, and numbering methodologies • Easy tracking of actions to work order completion 	<ul style="list-style-type: none"> • Powerful wizard, easy to navigate menus • Secure sign in/out, purchasing, gage, calibration, authorizing, ID • Create tool lists, MBOM, reporting, presetting, tool issue and return and more 	<ul style="list-style-type: none"> • Increase productivity • Flexible to accommodate any naming/numbering system • Easily associate tool lists with the manufacturing process/BOM
<ul style="list-style-type: none"> • Integrate with Tool Presetter and DNC (Direct Numerical Control) machines • Integrate tooling data with preventative maintenance 	<ul style="list-style-type: none"> • Communicates via RS-232 • Integrate with RealVision WebDNC and Toolset • Combine with RPM for preventative maintenance 	<ul style="list-style-type: none"> • Affordable, integrated solution to manage your tooling systems • Prolong tool life, minimize new tool purchases, bolster productivity and the bottom line
<ul style="list-style-type: none"> • Secure system; anti-theft protection 	<ul style="list-style-type: none"> • Authorized staff, user and tool hierarchy 	<ul style="list-style-type: none"> • Secure and efficient workflow

RealVision, Inc.

USA / North America

787 E State St.

Eagle, ID 83616

phone 208.939.2428

fax 208.939.2733

sales@realmfg.com

www.manageyourtooling.com



The Shop Floor
Productivity Experts

RealVision™ ProDocTivity™ Solutions

- Integrator™
- DocManager™
- WebDNC™
- ToolManager™
- RealVision Preventative Maintenance™ (RPM)
- ProDocTivity Suite

RealVision, Inc.

USA / North America

787 E State St.

Eagle, ID 83616

phone 208.939.2428

fax 208.939.2733

sales@realmfg.com

www.Realvisionsolutions.com



The Shop Floor
Productivity Experts

RealVision Manufacturing Solutions

The RealVision Difference

Services

RealVision's hands-on manufacturing and operations experience uniquely qualifies us to meet our customers' demands in their complex shop floor environments. RealVision ProDocTivity solutions provide you with best-in-class shop floor solutions, as well as a partner who backs you with quality services when needed. Our range of services support RealVision solutions, from your password-protected online access to Web self-serve support to one-on-one technical support from our staff. We also specialize in software customization for specific customer needs and training to best meet your business demands.

Solutions

RealVision has been providing manufacturing and management software solutions for industry since 1986. Scalable to meet your highest demand, our customer testimonials demonstrate our proven leadership in shop floor operations management. **The full RealVision portfolio of ProDocTivity solutions includes:**

RealVision Integrator

Integrator is a comprehensive Manufacturing Execution System (MES). With a powerful database, the RealVision Connect ODBC framework allows application connectivity to link your existing routing, BOM, and MRP info with blueprints, work instructions, and process documentation. Integrator supports ODBC connectivity with Oracle and Microsoft SQL data tables to create the client-server environment. Integrator also includes work instruction authoring tools, "smart forms," photo library, tool list authoring, and third party file management.

RealVision DocManager

DocManager is a paperless shop floor documentation and change management system that manages manufacturing documents -- CAD files, sketches, scanned images, and more. DocManager simplifies compliance with ISO 9000 requirements, handles the logistics of document distribution and viewing, and ENC tracking.

RealVision ToolManager

ToolManager manages tool purchasing, calibration, tracking, location and life cycle for multiple tool cribs, as well as project and task status, reporting, and much more. Includes RealVision ODBC Connect Framework networked solution. Allows authorized personnel to monitor the entire workflow, including tracking tool availability. Scales to manage requirements today and tomorrow.

WebDNC

WebDNC is the most advanced and powerful DNC communication system available today. Includes all the features of a standard high end DNC system plus program revision control, tool list management, part and job databases, integrated machine tool monitoring, NC programming, data collection, tool life integration, and document and drawing linking. Integrates with all RealVision ProDocTivity products.

RealVision Preventative Maintenance (RPM)

RPM schedules maintenance and tracks all related costs as well as the service part inventory to keep your equipment running. Powerful purchasing functions make it easy to control inventory and ability to order outside maintenance services. The work order system not only facilitates the collection of scheduled maintenance information labor and materials, but also handles all unplanned and emergency service.

ProDocTivity Suite

Combine any or all of the above standalone solutions (except RPM) to build a custom, integrated solution.