

RealVision Manufacturing Solutions, Inc.

DocManager — Document Management for Manufacturing and Technical Document Management

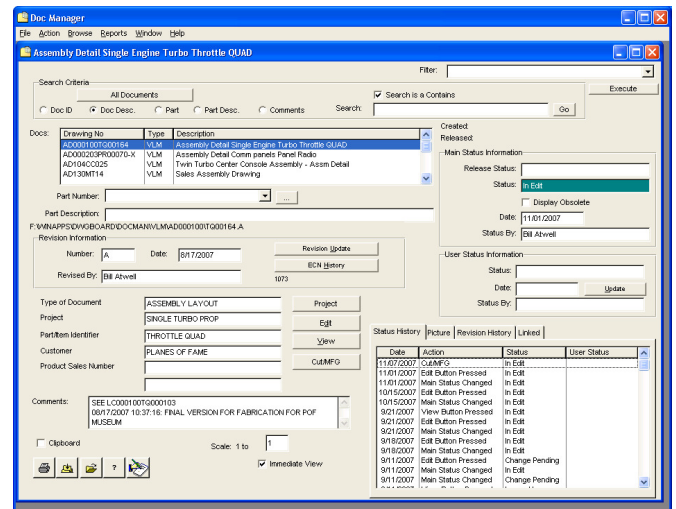
DocManager is a comprehensive manufacturing/technical document management and distribution system.

DocManager was specifically designed to be a network application, creating one central source for all document activity. It manages a full complement of document files, including CAD, sketches, scanned images, PDF files, etc.

Additionally, DocManager organizes, tracks revisions, allows viewing of the document, builds associations with part numbers, allows parts to have multiple documents and allows multiple documents for single parts.

Features Include:

- Document number builder
- Document to part number link BOM creator
- Engineering change manager
- Revision control and archive manager
- Printed document control and tracking
- Work flow manager
- Powerful red-lining and request for engineering change system
- Automatic document archiving and retrieval as well as document vaulting
- Allows true concurrent engineering
- Automatically passes documents, revision control, ECN's engineering holds and alerts to the ProDocTivity system for total control of the manufacturing environment
- Meets ISO9000 and stringent revision control requirements
- Multi-user network independent system



Free Demo

Call 208-939-2428 to learn more about DocManager and see firsthand what it can do for your business.

RealVision, Inc.

USA / North America

787 E State St.

Eagle, ID 83616

phone 208 939 2428

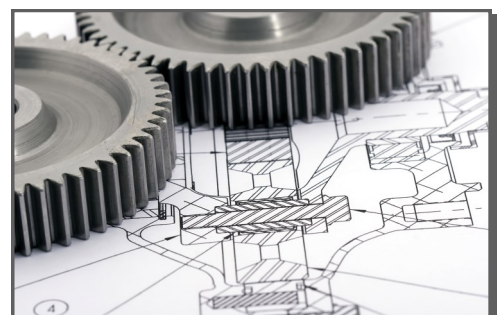
fax 208 939 2733

sales@realvmfg.com

www.realvisionmfgsolutions.com



The Shop Floor
Productivity Experts



DocManager Solutions

Issue/Need	DocManager Solution	Results/Benefits
<ul style="list-style-type: none"> • ISO Quality Requirement Compliant • Centralized location and access for all documents and related materials 	<ul style="list-style-type: none"> • Meets industry standard for ISO900X and CFR22 Part 11 Compliancy • Single, centralized source for all documents, revisions, warranties, product related materials, etc. 	<ul style="list-style-type: none"> • Quality management, control and complete history of all documentation. • Easily locate and store all documents and related materials.
<ul style="list-style-type: none"> • Document organization with multiple department access and availability 	<ul style="list-style-type: none"> • Organizes documents, tracks revisions, allows viewing of documents, builds association with part numbers with multi user capability 	<ul style="list-style-type: none"> • Multi– user, web based • All departments can access information concurrently • Most accurate information is available to avoid costly errors
<ul style="list-style-type: none"> • Management of document revisions to ensure latest release and accuracy 	<ul style="list-style-type: none"> • All documents are current and the latest revision is available throughout different departments 	<ul style="list-style-type: none"> • Revision control and archiving automatically tracked and document vaulting • Optimized information management process
<ul style="list-style-type: none"> • Document linking to parts for manufacturing 	<ul style="list-style-type: none"> • Links parts to documents for complete accuracy 	<ul style="list-style-type: none"> • Increased efficiency and reduced errors and costs
<ul style="list-style-type: none"> • Improved shop communication—enhanced intra-shop communication 	<ul style="list-style-type: none"> • Integrated emailing, automatically recording when documents are emailed or printed 	<ul style="list-style-type: none"> • Guarantees all employees are using the most accurate and up to date information • Improved communication to ensure the job is done correctly—reducing errors
<ul style="list-style-type: none"> • Consistency in document numbering and labeling 	<ul style="list-style-type: none"> • Document naming assistant that is user friendly and allows each department to configure a unique numbering system 	<ul style="list-style-type: none"> • Information is easy to find and track • Reduction in errors, misplacing docs and overall consistency

Why RealVision—

With over 25 years of experience, RealVision Manufacturing Solutions' unparalleled knowledge of manufacturing and shop floor operations is built into each of its products. Built by engineers for engineers, these practical solutions easily adapt to any manufacturing environment to provide all the efficiency and flexibility you need to manage your production systems flawlessly and build productivity, reduce scrap, save time, and lower costs.

Contact RealVision today at 208-939-2428 to request a free demo—the best way to visualize how RealVision can improve your documentation management, tool management, preventive maintenance, asset management and productivity and boost your bottom line.

RealVision, Inc.

USA / North America

787 E State St.

Eagle, ID 83616

phone 208 939 2428

fax 208 939 2733

sales@realmfg.com

www.realvisionmfgsolutions.com



The Shop Floor
Productivity Experts

RealVision™ ProDocTivity™ Solutions

- Integrator™
- DocManager™
- WebDNC™
- ToolManager™
- RealVision Preventative Maintenance™ (RPM)
- ProDocTivity Suite

RealVision, Inc.

USA / North America

787 E State St.

Eagle, ID 83616

phone 208.939.2428

fax 208.939.2733

sales@realmfg.com

www.Realvisionmfgsolutions.com



*The Shop Floor
Productivity Experts*

RealVision Manufacturing Solutions

The RealVision Difference

Services

RealVision's hands-on manufacturing and operations experience uniquely qualifies us to meet our customers' demands in their complex shop floor environments. RealVision ProDocTivity solutions provide you with best-in-class shop floor solutions, as well as a partner who backs you with quality services when needed. Our range of services support RealVision solutions, from your password-protected online access to Web self-serve support to one-on-one technical support from our staff. We also specialize in software customization for specific customer needs and training to best meet your business demands.

Solutions

RealVision has been providing manufacturing and management software solutions for industry since 1986. Scalable to meet your highest demand, our customer testimonials demonstrate our proven leadership in shop floor operations management. **The full RealVision portfolio of ProDocTivity solutions includes:**

RealVision Integrator

Integrator is a comprehensive Manufacturing Execution System (MES). With a powerful database, the RealVision Connect ODBC framework allows application connectivity to link your existing routing, BOM, and MRP info with blueprints, work instructions, and process documentation. Integrator supports ODBC connectivity with Oracle and Microsoft SQL data tables to create the client-server environment. Integrator also includes work instruction authoring tools, "smart forms," photo library, tool list authoring, and third party file management.

RealVision DocManager

DocManager is a paperless shop floor documentation and change management system that manages manufacturing documents -- CAD files, sketches, scanned images, and more. DocManager simplifies compliance with ISO 9000 requirements, handles the logistics of document distribution and viewing, and ENC tracking.

RealVision ToolManager

ToolManager manages tool purchasing, calibration, tracking, location and life cycle for multiple tool cribs, as well as project and task status, reporting, and much more. Includes RealVision ODBC Connect Framework networked solution. Allows authorized personnel to monitor the entire workflow, including tracking tool availability. Scales to manage requirements today and tomorrow.

WebDNC

WebDNC is the most advanced and powerful DNC communication system available today. Includes all the features of a standard high end DNC system plus program revision control, tool list management, part and job databases, integrated machine tool monitoring, NC programming, data collection, tool life integration, and document and drawing linking. Integrates with all RealVision ProDocTivity products.

RealVision Preventative Maintenance (RPM)

RPM schedules maintenance and tracks all related costs as well as the service part inventory to keep your equipment running. Powerful purchasing functions make it easy to control inventory and ability to order outside maintenance services. The work order system not only facilitates the collection of scheduled maintenance information labor and materials, but also handles all unplanned and emergency service.

ProDocTivity Suite

Combine any or all of the above standalone solutions (except RPM) to build a custom, integrated solution.